

# DSVMD

## Installation and Software Manual

for

RS-232 Serial Programming  
TCP/IP UDP Ethernet LAN Adapter Programming  
IP Address Serial Programming

of the

## DS1-PL and DS-16

Outdoor and Indoor  
**Digital Video Motion Detectors**

January 2007

TM

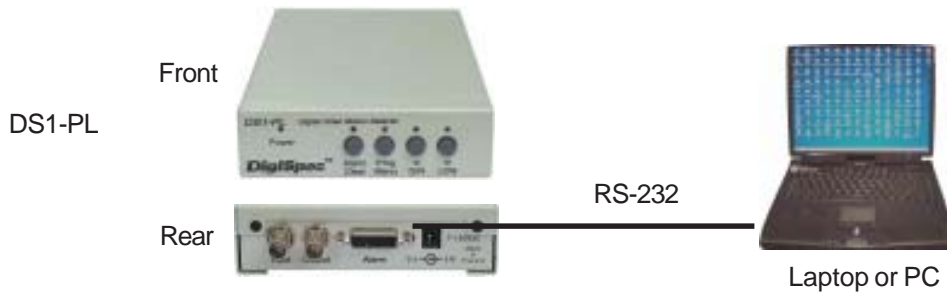
# ***DigiSpec***

## Introduction

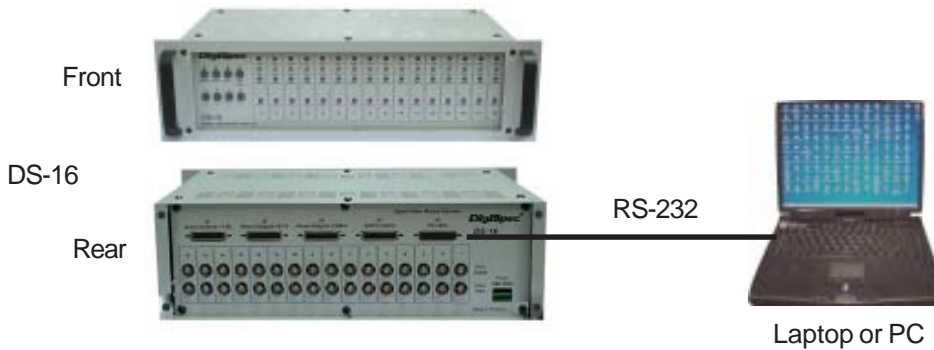
The DSVMD Software is a powerful PC Windows based application that allows users to program all the configuration settings of the DS1-PL or DS-16 on a PC. Many additional features can then be realized like Uploading and Downloading configurations saved on the PC. Interactive windows allow remote operators to view Alarm Status and Output Data on the PC screen along with the ability to remote the front panel keyboard of the VMDs for instant function changes.

The DSVMD operates either with direct RS-232 connection or via the TCP/IP DS Ethernet LAN adapter communicating in the UDP format. The TCP/IP DS adapter opens a whole new realm of operation of the DS1-PL which allows devices to be placed through out the facility with programming and reporting done via the Ethernet LAN. No longer is it necessary to interactively view the video monitor or connect hard alarms, all data is delivered directly to your PC Desktop.

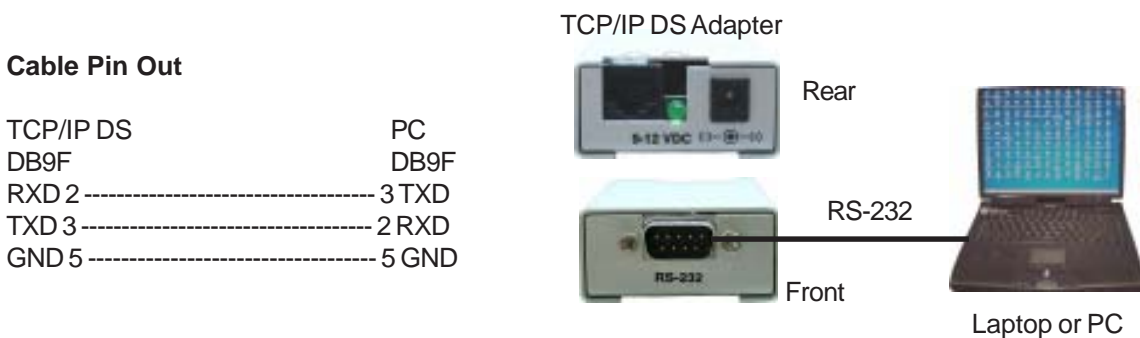
### Serial Connection to DS1-PL



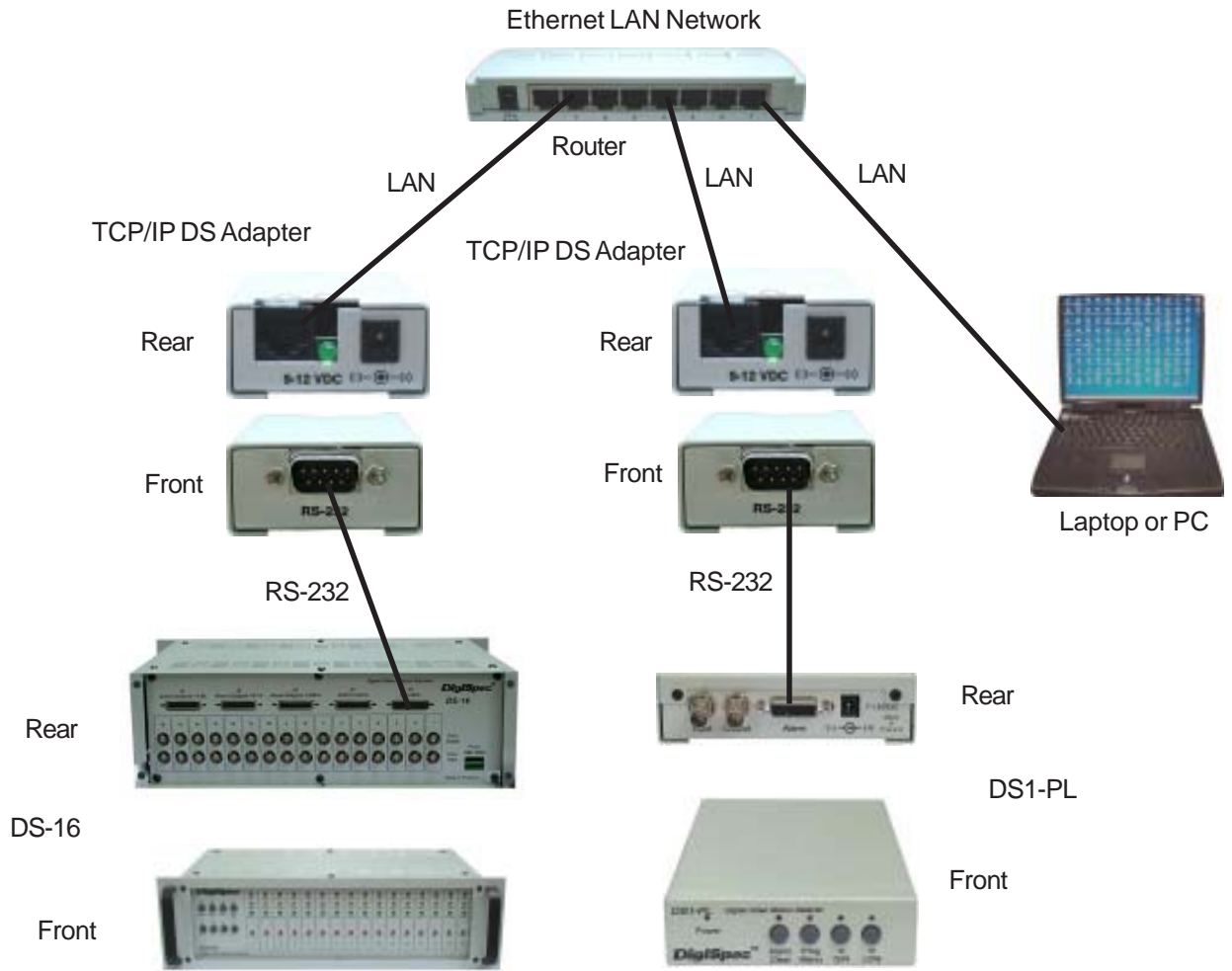
### Serial Connection to DS-16



### IP Address Programming of the TCP/IP DS Adapter



## Ethernet LAN Configuration



### Cable Pin Outs

TCP/IP DS or PC  
 DB9F  
 RXD 2 -----  
 TXD 3 -----  
 DTR 4 -----  
 GND 5 -----

DS-16  
 DB25F  
 3 TXD  
 2 RXD  
 4 DTR  
 5 GND

TCP/IP DS or PC  
 DB9F  
 RXD 2 -----  
 TXD 3 -----  
 GND 5 -----

DS1-PL  
 DB15M  
 13 TXD  
 14 RXD  
 12 GND

## Installing the DSVMD

Browse the DigiSpec CD-ROM to find the DVMD software or try to looking in a path similar to below:

“E:\DSVMD\Setup\Setup.exe”

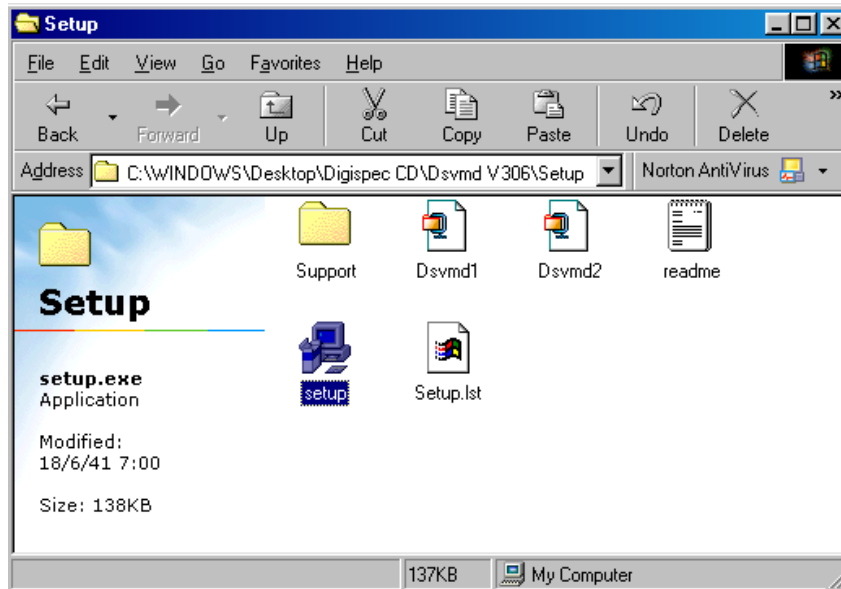


Figure 1: Windows

Double click on “Setup.exe” to begin the setup. The setup menu will pop up and click “OK” to continue.

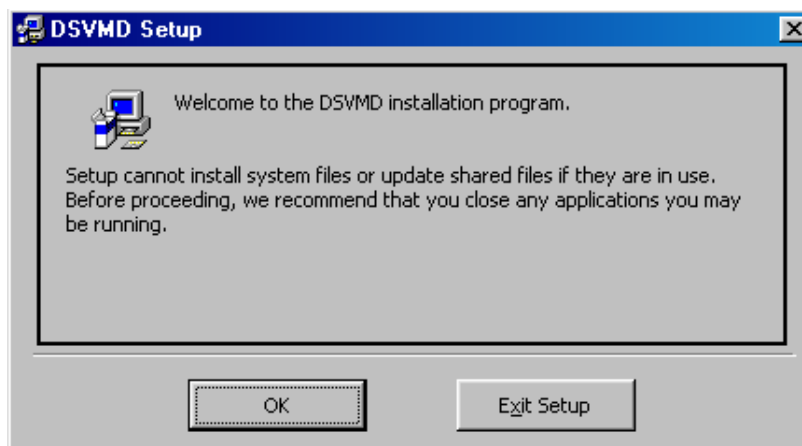


Figure 2: DVMD Setup

Click on the “Setup” button and the setup will start installing the DSVMD software, or click on the “change directory” button to change the installation path.

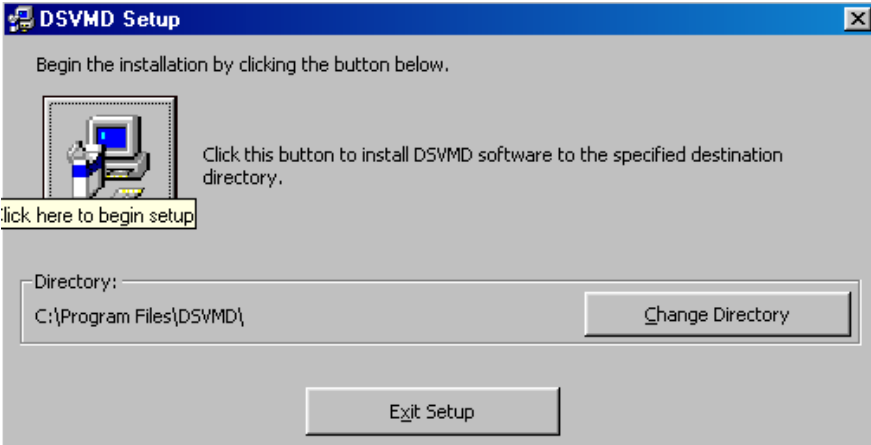


Figure 3: Beginning the Installation Process

Select your program group to which you would like DSVMD to be installed, or click “Continue” to use the default group in DSVMD.

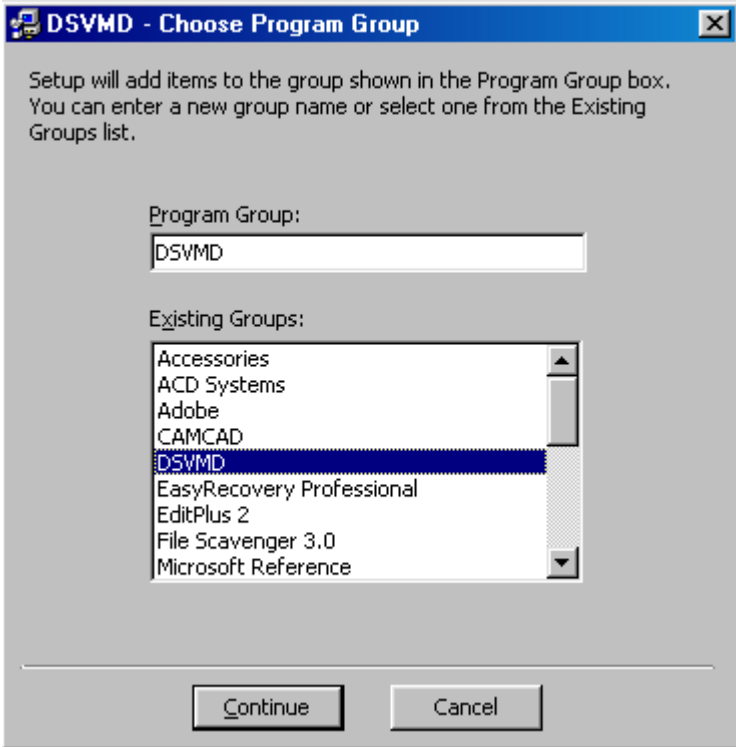


Figure 4: Program Group Menu

The DSVMD setup wizard will start to install files to the destination path. After complete, the Successful Setup menu will be displayed to indicate your DSVMD setup is completed.

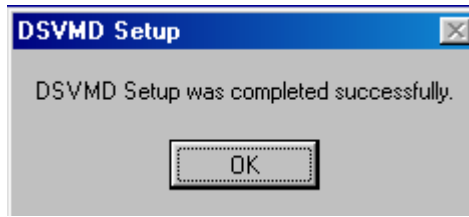


Figure 5: Successful Setup Menu

## Getting Started with DSVMD

After successful installation then run the DSVMD software from your program menu on Windows. The DSVMD will show the setting menu to select direct serial programming, UDP Ethernet using the TCP/IP adapter or setting the IP of the TCP/IP adapter.

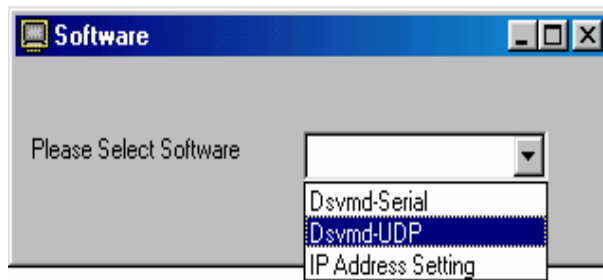


Figure 6: Start Up DSVMD

## Serial Connection

Verify you have the proper serial cable connected from your PC to the DS1-PI or DS-16. Then select what product you are using the DS1-PL or the DS-16. Then select what video format you are using either NTSC or PAL. Now select your serial communication depending on which serial cable was connected. Make sure the baud rate is the same as your target unit. If the DS-16 is selected you need to set up the DS-16 hardware to enable RS-232. Consult the DS-16 RS-232 Setup in the DS-16 Manual.

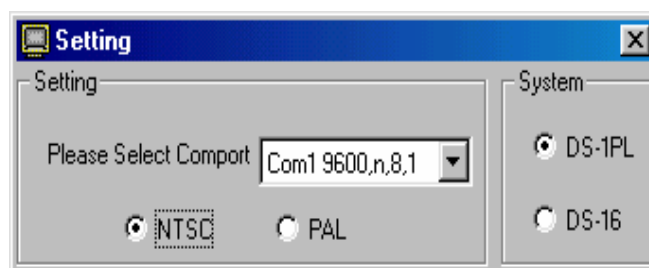


Figure 7: COM Port Selection

**Note:** If the cable, Comport or baudrate is incorrect the unit will give an error or ask you if you want to work offline. Re-enter the correct data or correct the cabling problem or click "Work Offline"

## Ethernet Connection

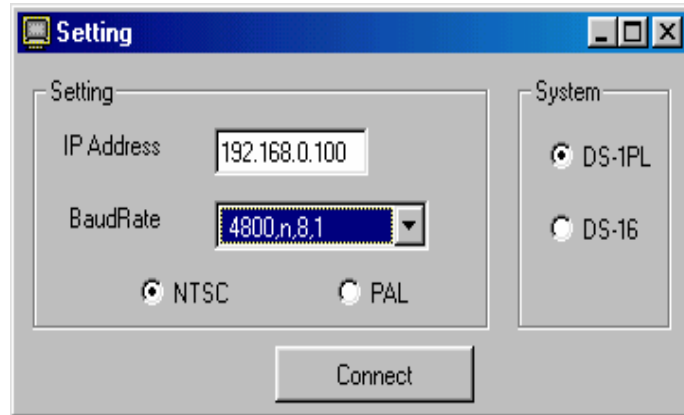


Figure 8: IP and Baudrate Setting Menu

First select what product you are using, either the DS1-PL or DS-16. Then select what video format you are using NTSC or PAL. Set the IP address of the TCP/IP adapter. If you do not know then go to "IP Address Setting" and either set the IP to the one you desire or verify it is set already. Then go to Baudrate and select the baud rate of the adapter to the DS1-PI or DS-16. The default is 4800,8,n,1.

**Note:** If the cable, Comport or baudrate is incorrect the unit will give an error or ask you if you want to work offline. Re-enter the correct data or correct the cabling problem or click "Work Offline"

## IP Address Setting

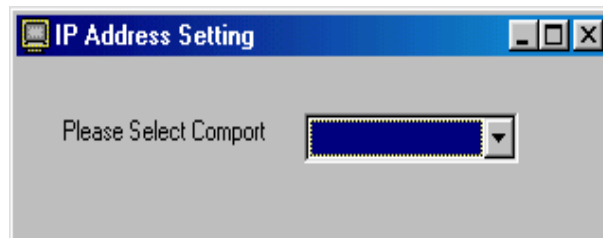


Figure 9 : IP Address ComPort Setting

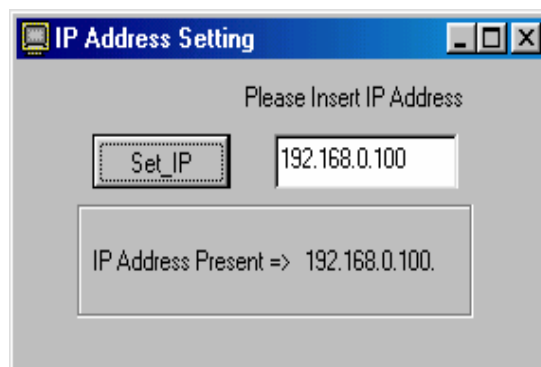


Figure 10: IP Address Changing

Verify you have the proper serial cable connected from your PC to the TCP/IP Adapter. Select the Comport and baud rate of your computer. The default is 4800,8,n,1. Once connection is established the TCP/IP adapter will report the current IP Address set internally. You can either exit if this is correct or enter a new IP address into the provide box and click "Set IP". The new IP will then be updated in the adapter and show on the display "IP Address Present".

**Note:** If the cable, Comport or baudrate is incorrect the unit will give an error. Re-enter the correct data or correct the cabling problem and try again.

After selecting your serial communication port, the main menu will appear on the monitor. The default menu will begin in Day Mode as you can see on the header. This is likely the same the DS1-PL, or DS1-SPL / DS-16. The Main Menu title line will reflect if Day or Night Mode and if Video is Present or Not.

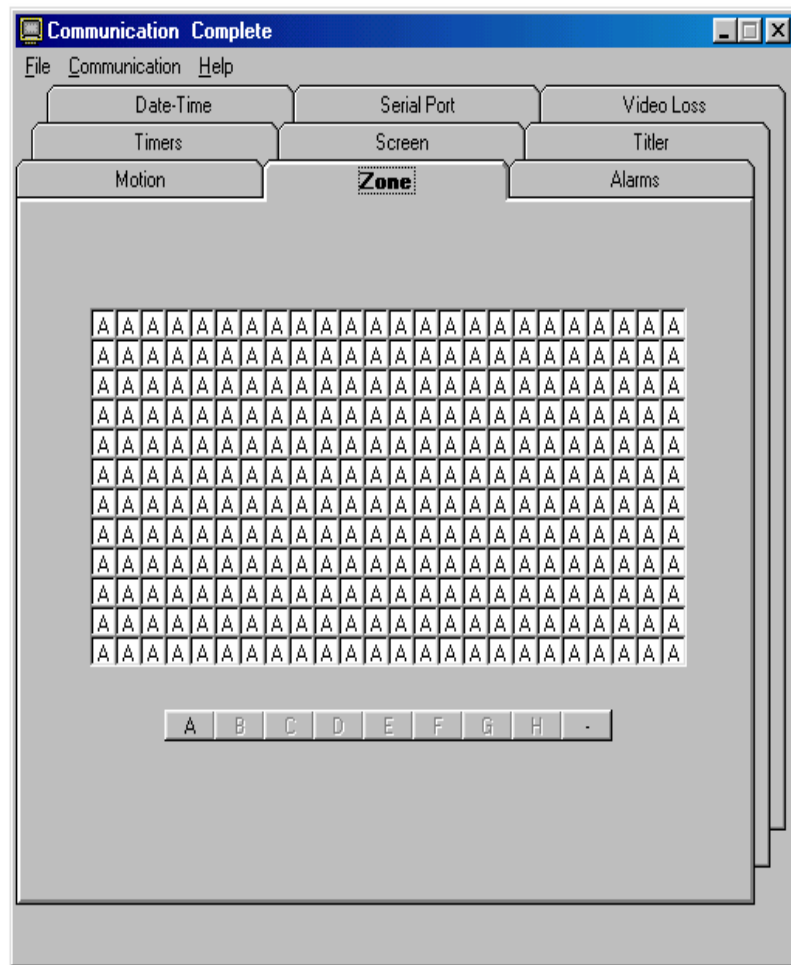


Figure 11 : Main Menu

### File Menu

**Open** - You can click this to open a previously saved configuration file of all the settings. Note that when you Open a new configuration file all the settings in the Main Menu will be replaced with the new settings from the opened file.

**Save** - Click this to save the current configuration file entered into all the settings of the Main Menu.

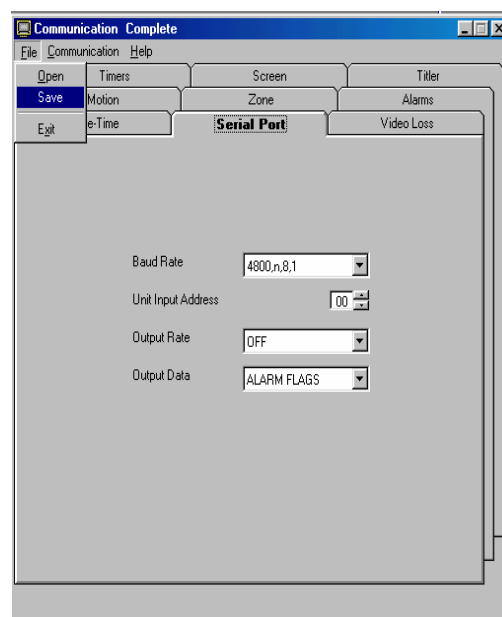


Figure 12 : File Menu



## Communication Menu

**Set ComPort** - This is to change the ComPort, refer to Section XXX

**Keyboard** - Simulating the Front Panel Pushbuttons of DS-1PL or DS-16

**Upload** - Uploading the configuration from DS-1PL or DS-16 to computer.

**Download** - Downloading the configuration from the computer to DS-1PL or DS-16

**Alarm Window** - Displaying the Alarm Status

**Serial Window** - Displaying the data output from the unit.

**Mode Day/Night** - Changing Day/Night mode.

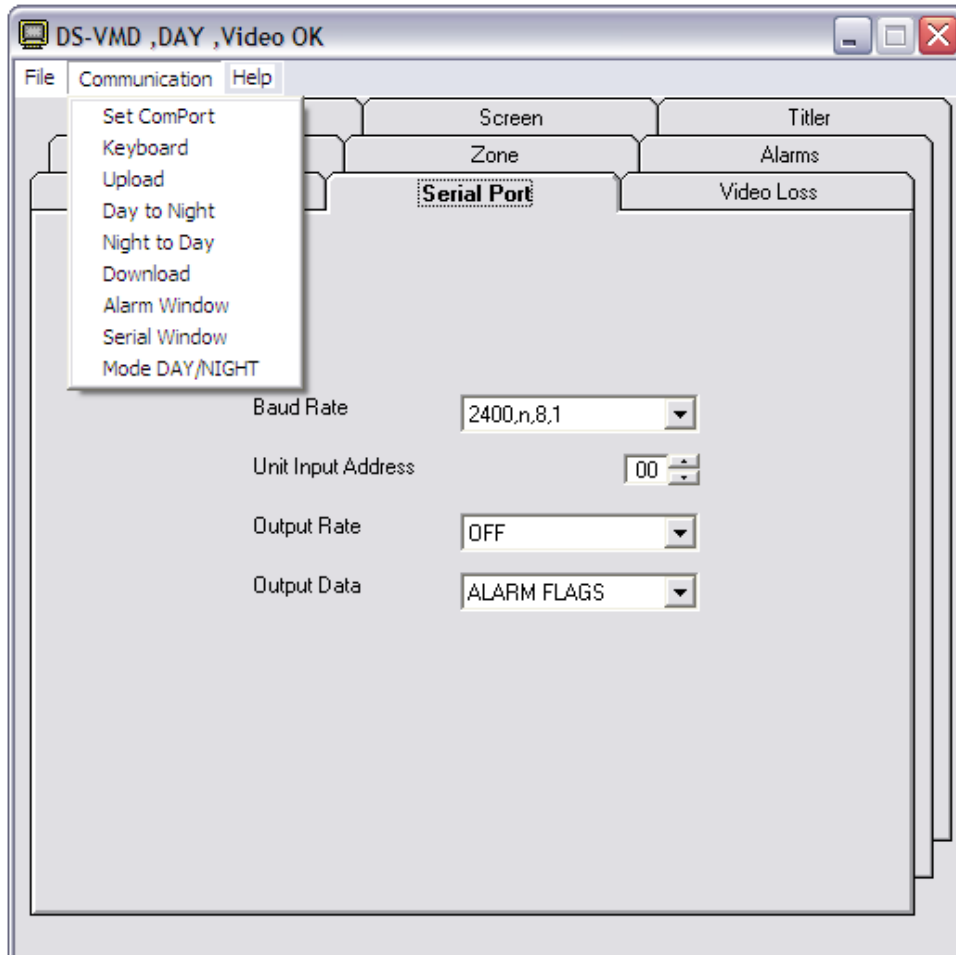


Figure 13 : Communication Menu

## Keyboard

This feature will simulate the keypad on the front panels both the DS1-PL and DS-16. It will allow the user access the same as the keypad on the front panel of the products. The figure below shows the keypad of the DS1-PL / DS-16.

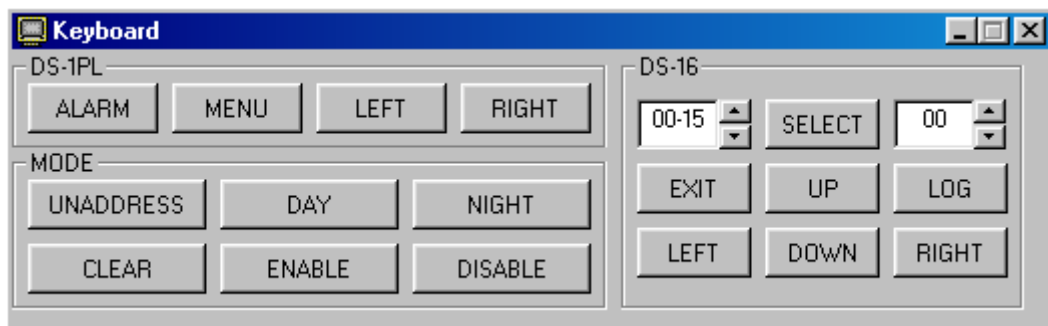


Figure 14 : Keypad Simulation

### UNADDRESS

This will deselect all video motion detectors.

### DAY / NIGHT

Use DAY button to select Day configurations and use NIGHT button to set Night Mode configurations.

### ENABLE / DISABLE

This will enable or disable all video motion detection.

### CLEAR

While the video motion is alarming or detecting movement, the clear button will reset all video motion alarms and restart processing.

### Upload

Upload is used to take the configuration parameters from the DS1-PL and upload to the PC. The following window will display while the uploading is in process. Also the video screen of the unit will show it is uploading and when completed. This feature is not available for the DS-16 rack.



Figure 15 : Upload Status

### Day to Night

This allows an easy method to copy all the Day settings to the Night settings.

### Night to Day

This allows an easy method to copy all the Night settings to the Day settings.

### Download

Download is used to download all the configuration parameters from the PC to the DS1-PL or DS-16. The window will display similar to the Upload above while the downloading is in process. Also the video screen of the unit will show it is downloading and when completed

### Alarm Window

This window gives the status of all the 8 alarms of the DS1-PL. This is not necessarily the status of the Relay output unless programmed for Alarm response. The 8 zone alarms are reflected here. The sound of the PC can be enabled or disabled during an alarm condition and does not effect the buzzer function of the DS1-PL.

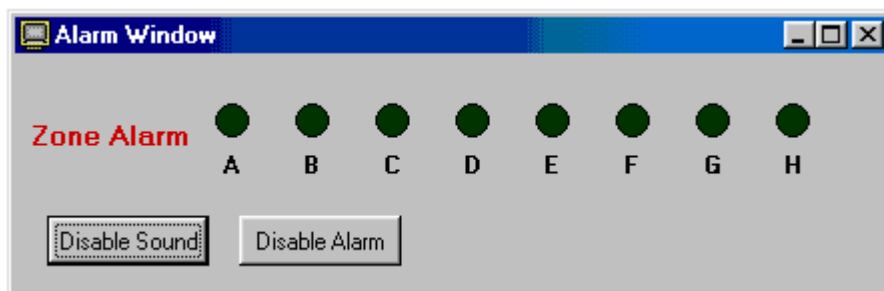


Figure 16 : Alarm Status

## Serial Window

This tool is provided for the User to get the VMD alarms and related parameters via the serial port such as alarm log, alarm status, moving pixel, etc. This feature is available for the DS1-PL only. The User must define the serial port on the DS1-SPL. Consult the DS1-PL serial setup.

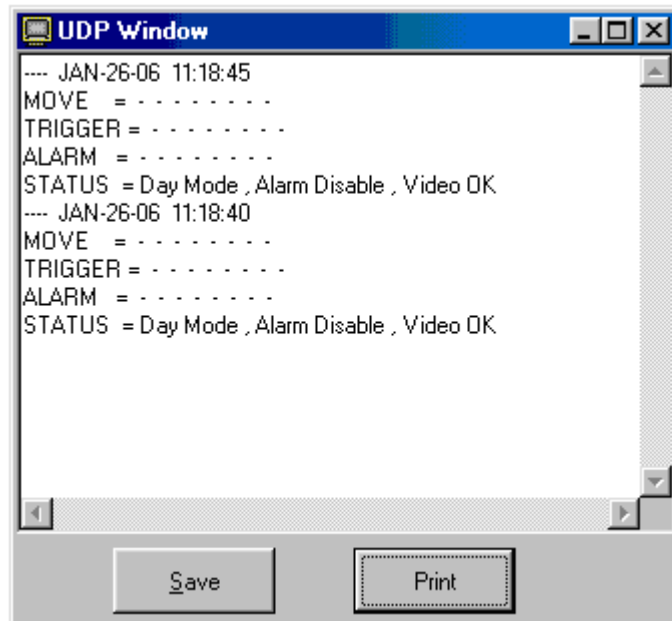


Figure 17 : Serial Window

## DAY / NIGHT MODE

Move the cursor to the "Communication" menu and click, then slide the cursor down to "Mode Day / Night" and click again. The Day / Night menu will pop up. Click to select the desired mode, then click "OK" to accept the change. This will allow you to program configurations in either the Day or Night mode and is reflected at the top of the Main Menu.

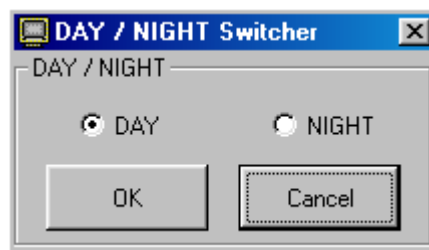


Figure 18 : Day / Night Switcher

TM

***DigiSpec***

**DigiSpec Inc.**  
1906 Treble Dr.  
Humble, Texas 77338

**Las Vegas Office**  
9070 Royal Monarch Ct.  
Las Vegas, Nevada 89147  
Tel: 702-341-0333 Fax: 702-341-0334  
Email: [john@digispecvideomotion.com](mailto:john@digispecvideomotion.com)  
Web Site:  
[www.digispecvideomotion.com](http://www.digispecvideomotion.com)